

YEAR

2022

LINK KAM SHEUNG RD (from KAM TIN RD to KAM TIN RD)

COVERAGE (B) STATION

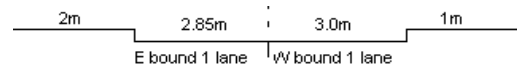
6208

ROAD NETWORK

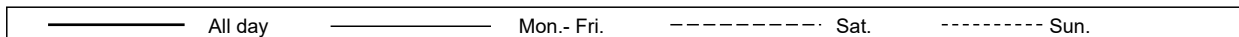
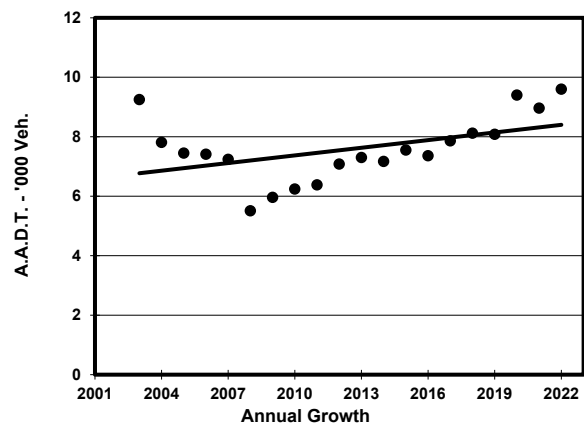
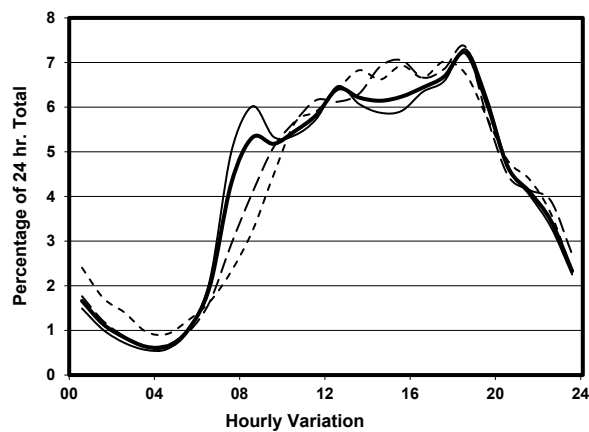
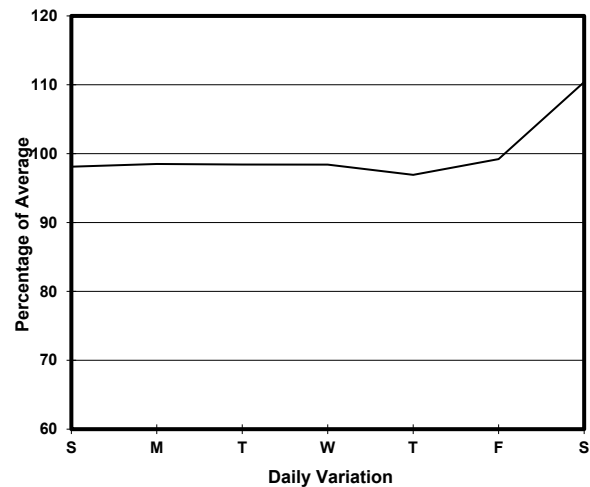
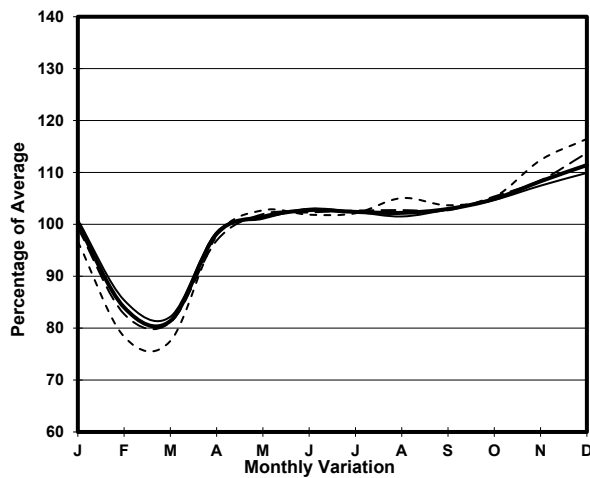
MAJOR

ROAD TYPE

RURAL ROAD



1. TRAFFIC FLOW VARIATION AND GROWTH



2. TRAFFIC CHARACTERISTICS (BY DIRECTION)

Parameter	All - Day	Mon. - Fri.	Sat.	Sun.
EAST BOUND				
A.A.D.T.	5030	4980	5520	4880
R 12 / 24 - %	70.4	71.1	70	67.1
R 16 / 24 - %	89.6	90.2	89.3	87
AM Peak Hour	0900-1000	0800-0900	0900-1000	0900-1000
One-way flow at AM peak hour	270	290	270	190
T - % (AM)	-	7.1	-	-
PM Peak Hour	1800-1900	1800-1900	1800-1900	1600-1700
One-way flow at PM peak hour	350	350	390	350
T - % (PM)	-	5.4	-	-
Prop.of commercial vehicles - 16 hr.	-	5.1	-	-
WEST BOUND				
A.A.D.T.	4570	4500	5070	4410
R 12 / 24 - %	72.6	73	72.6	70.8
R 16 / 24 - %	89.9	90.3	89.8	87.8
AM Peak Hour	0800-0900	0700-0800	0900-1000	0900-1000
One-way flow at AM peak hour	260	300	270	220
T - % (AM)	-	6.5	-	-
PM Peak Hour	1800-1900	1800-1900	1800-1900	1800-1900
One-way flow at PM peak hour	340	340	390	330
T - % (PM)	-	1.8	-	-
Prop.of commercial vehicles - 16 hr.	-	6.5	-	-

3. OTHER INFORMATION AND COMMENT

4. Vehicle classification and occupancy - Monday to Friday

Time		Class of vehicle									
		Motor Cycle	Private Car	Taxi	Private LB	PLB	Goods veh.		Non Fr. Bus	Fr. Bus	
							Light	M & H		SD	DD
0700-0800	Pro	2.1	54.2	10.4	3.1	8.3	13.5	3.1	3.1	0.0	2.1
	Ocp	1.5	1.4	1.6	10.3	8.6	1.3	1.3	35.3	0.0	25.9
0800-0900	Pro	0.7	58.5	4.8	6.2	7.6	13.1	4.8	2.8	0.0	1.6
	Ocp	1.0	1.3	2.1	5.6	11.1	1.5	1.1	30.8	0.0	18.2
0900-1000	Pro	2.8	51.7	7.1	2.1	9.2	21.9	2.8	0.0	0.0	2.3
	Ocp	1.0	1.2	1.8	11.7	6.4	1.5	1.3	0.0	0.0	14.6
1000-1100	Pro	1.6	51.0	11.8	0.0	6.3	22.7	4.7	0.0	0.0	2.0
	Ocp	1.0	1.2	1.5	0.0	7.9	1.3	1.5	0.0	0.0	15.7
1100-1200	Pro	1.5	45.2	6.9	0.0	9.2	29.9	5.4	0.0	0.0	1.9
	Ocp	1.0	1.4	2.2	0.0	10.3	1.3	1.6	0.0	0.0	17.7
1200-1300	Pro	1.8	55.7	9.1	4.2	5.4	18.2	3.6	0.6	0.0	1.4
	Ocp	1.0	1.3	1.8	6.3	8.1	1.4	1.0	15.0	0.0	21.6
1300-1400	Pro	0.6	54.8	9.0	0.6	8.4	21.3	2.6	0.6	0.0	2.1
	Ocp	1.0	1.2	1.9	10.0	7.7	1.5	1.0	7.0	0.0	21.1
1400-1500	Pro	2.8	52.9	6.7	0.6	4.5	25.0	5.0	1.1	0.0	1.5
	Ocp	1.4	1.6	1.7	2.0	8.1	1.3	1.2	1.0	0.0	24.0
1500-1600	Pro	0.6	52.9	11.5	1.9	5.1	22.3	3.8	0.0	0.0	1.9
	Ocp	1.0	1.3	1.8	1.0	7.0	1.3	1.3	0.0	0.0	15.4
1600-1700	Pro	2.7	54.6	9.6	3.4	4.8	17.7	4.8	0.7	0.0	1.7
	Ocp	1.3	1.2	2.2	7.8	9.6	1.2	1.0	8.0	0.0	25.0
1700-1800	Pro	5.0	62.6	10.7	0.7	7.1	10.0	1.4	0.0	0.0	2.5
	Ocp	1.0	1.2	1.9	1.0	8.8	1.6	1.0	0.0	0.0	24.7
1800-1900 Peak hour	Pro	4.1	66.7	8.1	0.0	4.6	12.7	1.5	0.5	0.0	1.8
	Ocp	1.3	1.4	1.7	0.0	15.2	1.4	1.0	32.0	0.0	19.2
1900-2000	Pro	3.3	79.5	3.3	0.0	4.7	5.3	0.7	1.3	0.0	1.8
	Ocp	1.0	1.5	2.0	0.0	9.7	1.6	1.0	23.5	0.0	16.7
2000-2100	Pro	4.4	71.9	3.5	0.9	3.5	10.5	1.8	0.9	0.0	2.6
	Ocp	1.4	1.5	1.8	1.0	4.0	1.3	1.0	2.0	0.0	12.2
2100-2200	Pro	1.0	74.7	8.2	0.0	4.1	8.2	1.0	0.0	0.0	2.8
	Ocp	2.0	1.4	2.0	0.0	5.0	1.6	1.0	0.0	0.0	10.2
2200-2300	Pro	2.1	64.0	23.1	0.0	0.0	7.4	1.1	0.0	0.0	2.4
	Ocp	1.0	1.5	1.8	0.0	0.0	1.3	1.0	0.0	0.0	10.8
16 hours	Pro	2.4	59.1	8.7	1.5	5.9	16.7	3.1	0.7	0.0	2.0
	Ocp	1.2	1.4	1.8	6.4	8.8	1.4	1.2	21.4	0.0	18.3

Legend: Pro. Proportion of vehicles in % (Sum may not add up to 100% due to figure rounding)*

Ocp. Average occupancy of vehicles including both driver and passengers*

M&H Medium and Heavy

* All traffic data are collected from combined bounds